

BAKER ELA OUTREACH LEARNING

May 11 – May 15, 2020

6 TH GRADE ELA		Week of May 11 – May 15, 2020	
Teacher/Team:	Aubrey Ordonez / 6 th Grade Language Arts REGULAR and PRE-AP		
If there are any questions, please feel free to email me at:	Email: ordoneza@lpisd.org		<div>Connect with me on Remind! https://www.remind.com/join/336afb</div>
Link to TEAMS:	TEAMS or www.tiny.cc/microteams		
	Please use TEAMS to access the lesson plan and other needed documents. However, you will turn your assignments in through HMH.		
	TEAMS student log in info: <ul style="list-style-type: none">• username: lastname.firstname@student.lpsd.org• password: Same as computer login password (4 letters 4 #s)		
	Video to see how to access HMH: https://youtu.be/h0X_q8nyCRs		
	Direct link to HMH: https://www.hmhco.com/one/login/		
Links to:			
TEKS:	6.2(B) use context such as definition, analogy, and examples to clarify the meaning of words 6.5(F) make inferences and use evidence to support understanding 6.5(H) synthesize information to create new understanding 6.6(D) paraphrase and summarize texts in ways that maintain meaning and logical order 6.7(A) infer multiple themes within and across texts using text evidence 6.7(B) analyze how the characters' internal and external responses develop the plot 6.9(B) analyze how the use of text structure contributes to the author's purpose 6.9(F) analyze how the author's use of language contributes to mood and voice 6.1H Develop and expand repertoire of learning strategies		

**Connect with me on
Remind!**

<https://www.remind.com/join/336afb>

BAKER ELA OUTREACH LEARNING

May 11 – May 15, 2020

Objectives

Objective / I Can:

- I will read “*The Fisherman and the Chamberlain*” to make inferences and use evidence to support my understanding.
- I will create a graphic organizer to develop the sequential order in a folktale.

Activities

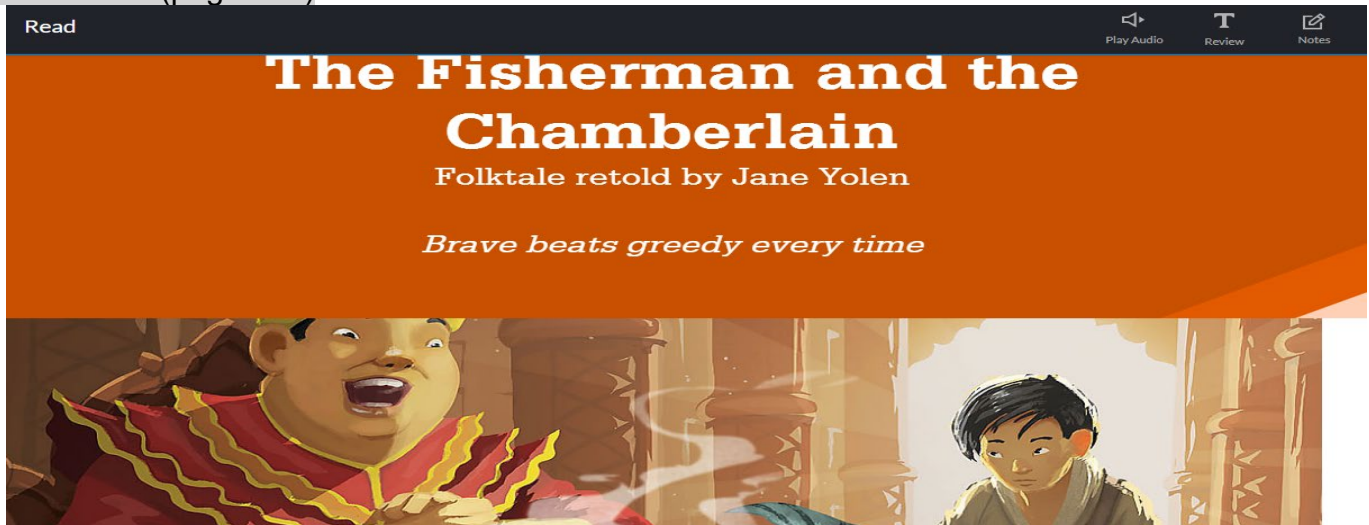
Student Activities:

Remember: the **GOOGLE CHROME** browser interacts better with our school software. You should use a **GOOGLE CHROME** browser to have less technical issues.

Assignment --To complete the assignment, use the following steps:

1. From the LPISD **student portal**, scroll down to the bottom left (click) **Online Textbooks**, choose the link for **HMH Ed** to access your workbook.
2. Student Log: **Username-** lastname.firstname
Password-Your 8-digit letter and number combination (ex-ABCD1234)
3. Click on the assignments tab (at the top, in the middle)

Complete the “Read” and “Quiz” assignments for Unit 6 Independent Reading “*The Fisherman and the Chamberlain*” (page 503)



1. “Read” *The Fisherman and the Chamberlain* assignment, read and use to answer quiz questions.
2. Complete the “Online Selection and Unit Tests: “*The Fisherman and the Chamberlain*”
 - Complete this in TEAMS > Assignments

BAKER ELA OUTREACH LEARNING

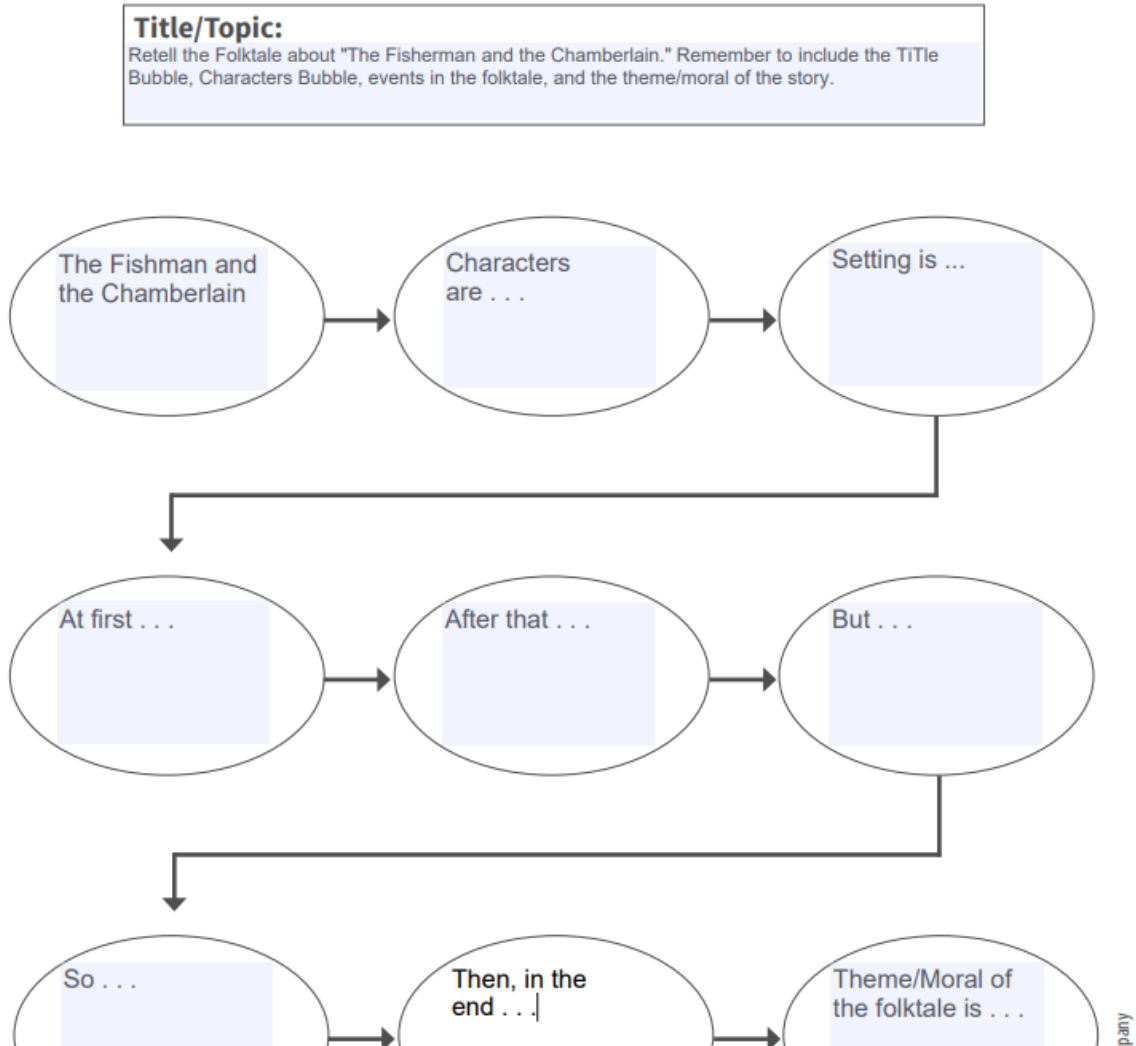
May 11 – May 15, 2020

3. “Read” *Echo and Narcissus* assignment, read and use to answer quiz questions.

4. **Graphic Organizer: Order and Sequence Chart**

- Retell the folktale about *The Fisherman and the Chamberlain* in your own words. Remember to include a Title bubble, Characters bubble, events bubbles, and theme/moral of the story bubble.

(see picture below)



As you are completing the assignments, please understand the following:

BAKER ELA OUTREACH LEARNING

May 11 – May 15, 2020

1. Once a student clicks “Submit”, it cannot be re-opened.
2. The assignments from the “Get Ready” will automatically save, but the written response items during the read need to be saved in each box that they type in.
 - For example, if a student completes a response for the first annotation, they need to hit SAVE.
3. If a student needs to exit and did not complete the activity, they can hit pause/resume to come back to an assignment they have already started without losing any progress. However, once they hit save or submit, they cannot go back to the assignment for corrections or access.
4. Students need to click “Submit” for all online assessments for them to be scored.

Reading strategies to implement whenever possible:

- Identify who or what the passage is about.
- Underline important information about people, places, dates and events.
- Make sure to look closely at all of the text and graphic features (graphs, headings, pictures, captions, etc.)
- If a word is underlined, box it in and try to figure out what it means by using context clues.
- Identify the characters and circle their names.
- Identify the setting (place and time) and circle it.
- Identify the problems in the story and circle them.
 - Write a letter “P” when you find them.
- Identify the solutions in the story and circle them.
 - Write a letter “S” when you find them.
- Pay close attention to all of the characters... their actions, feelings and changes they go through.
- If a word is underlined, box it in and try to figure out what it means.

Academic/Instructional Support

Schedule:

Students need to work on ELA:

- 2 hours on Wednesdays

MONDAY - THURSDAY

9:00AM – 11:00AM

Office Hours:

YOU MAY USE CHAT IN TEAMS, REMIND, OR EMAIL ME AT ordoneza@lpsd.org.

Feel free to contact me at all times of the day! I will respond as soon as possible outside of my office hours.

To Be Graded

BAKER ELA OUTREACH LEARNING

May 11 – May 15, 2020

Assignments for students to save and submit in **HMH** "Assignments":

- **Read and annotate:** *The Fisherman and the Chamberlain*

Assignments for students to save and submit in **TEAMS** "Assignments":

- Complete "**Online Selection & Unit Tests:** *"The Fisherman and the Chamberlain"*
- Complete the Graphic Organizer: Order and Sequence Chart

FAQS:

When are these assignments due?

Monday, May 18th by 8:00 A.M.

What assignments will the student submit?

1. Read, Annotations and responses (in **HMH**)
2. Complete Online Selection & Unit Tests: "The Fisherman and the Chamberlain" (in **TEAMS**)
3. Complete the Graphic Organizer: Order and Sequence Chart (in **TEAMS**)

How to access the lesson plan, the chat, or other materials?

4. Through **TEAMS** (use the hyperlink or go to www.tiny.cc/microteams)
 - a. Files will be uploaded under "Files", then in the folder named "Week 8 – May 11-May 15"
5. Passages for assignments will be in **HMH**, under "Assignments"
6. Assignments will be in **TEAMS**, under "Assignments"

How will it be submitted?

- a. Student responses are saved on the HMH site with student specific login.
- b. This link will help walk you through how to access the HMH website:
https://youtu.be/h0X_q8nyCRs
- c. Direct link to HMH: <https://www.hmhco.com/one/login/>
- d. TEAMS > Assignments
- e. Electronically, except by individual arrangement.

How to annotate in HMH?

- <https://youtu.be/Du-6NNrOTTQ>

****REMINDER****

BAKER ELA OUTREACH LEARNING

May 11 – May 15, 2020

YOU MUST GO TO HMH TO READ AND ANNOTATE THE PASSAGE **BEFORE** COMPLETING THE QUESTIONS IN TEAMS!!! To do this, please follow the following directions:

7. Go to <https://www.hmhco.com/one/login/>
8. You must select "District"
9. Type in "La Porte" and it should pop up
10. Username: lastname.firstname
11. Password: same as usual (4 letters 4 #s)

If you are still not quite sure how to log on, please watch the following video to walk you through this process. The link for the video is https://youtu.be/h0X_q8nyCRs.

Additional Resources: EXTEND YOUR LEARNING

- Edgenuity:
 - Go to Clever through the LPISD website to access the Edgenuity app
 - Go to <https://www.lpisd.org/student-portal-clone>
 - Go to the "Clever" link
 - Login in using the same login information as their computer login
 - Go to the "Edgenuity" application
 - We do this every week during Bear Time, so students are VERY familiar with this resource!
- [Intro to Myths, Fables, Legends, and Fairy Tales](#)
- [How to Determine the Moral of the Fable](#)